

# Industrial Land Development



Industry today must deliver high quality products efficiently and strategically. Increasing demands for goods has resulted in increased land development needs. Morrison Hershfield responds by providing the engineering and related consulting services necessary to every stage of land development projects, from inception to completion and beyond.

Land development engineering services are provided for a variety of industries, including forestry, oil and gas, nuclear power sites, agri-business, expediting and warehousing and landfills. Services include:

- Feasibility studies
- Planning and detailed design
- Project and program management
- Public consultation
- Regulatory compliance
- Construction management services
- Sustainable design
- LEED® certified development
- Survey
- Individual lot mechanical site plan
- Stormwater master Plan
- Stormwater management
- Traffic Impact Assessments
- Environmental Impact Assessments (Level 1)
- Wetland replacement and mitigation
- Fire protection strategies



Stormwater Management Plan for Industrial Park



Insulation Plant Engineering Services



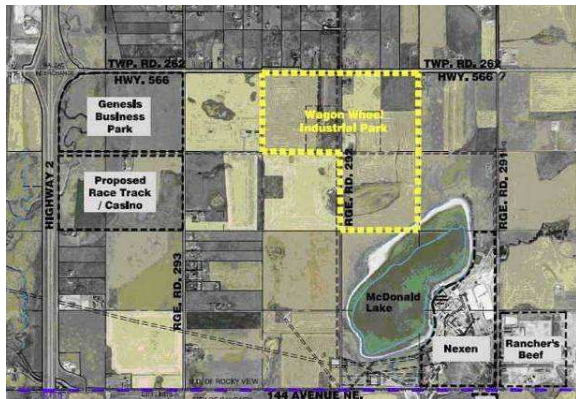
Landfill Cell Coverage and Drainage Improvements



NOVA Firewater System Replacement



Site Selection for new Oriented Strand Board Facility



### Wagon Wheel Industrial Park

The 320 acre Wagon Wheel Industrial Park is located in East Balzac, AB. We completed a detailed Stormwater Management Plan for the three quarter sections, including detailed stormwater modeling, drainage routing analysis, stormwater pond design, and construction management. A unique solution for disposal to Macdonald Lake, complete with a settlement forebay, was provided. We were also the prime consultant for delivering water and sewer services via a wastewater forcemain from the Hamlet of Langdon, and from a potable water system. We designed a total of two sanitary lift stations, two stormwater lift stations and an irrigation system.



### Site Development for Manufacturer of Specialty Forest Products

Our solid relationship with Tolko Industries has resulted from the successful completion of several site development projects since 1994, including a new \$35M I-Joist plant and an award winning design/build of a crane runway and log yard at a new OSB mill.

